



**Basic Setup of Hikvision Recorder**

**Hikvision Entry Learning**

**Before connecting and operating your device, please be advised of the following tips:**

- **Ensure unit is installed in a well-ventilated, dust-free environment.**
- **Unit is designed for indoor use only.**
- **Keep all liquids away from the device.**
- **Ensure environmental conditions meet factory specifications.**
- **Ensure unit is properly secured to a rack or shelf. Major shocks or jolts to the unit as a result of dropping it may cause damage to the sensitive electronics within the unit.**
- **Use the device in conjunction with an UPS if possible.**
- **Power down the unit before connecting and disconnecting accessories and peripherals.**
- **A factory recommended HDD should be used for this device.**
- **Improper use or replacement of the battery may result in hazard of explosion. Replace with the same or equivalent type only. Dispose of used batteries according to the instructions provided by the manufacturer.**


# One Important Step

Please activate the device (DVR/NVR from V3.3.0) through a compulsory password setting as the first time you login. To ensure the security of your device and protect against unauthorized access to the product, please set a password with a strong level.


**Activation**

User Name	admin
Create New P...	***** <b>Strong</b>
Confirm New P...	*****

✓ Valid password range [8-16]. You can use a combination of numbers, lowercase, uppercase and special character for your password with at least two kinds of them contained.

 **OK** **Cancel**

**Attention**

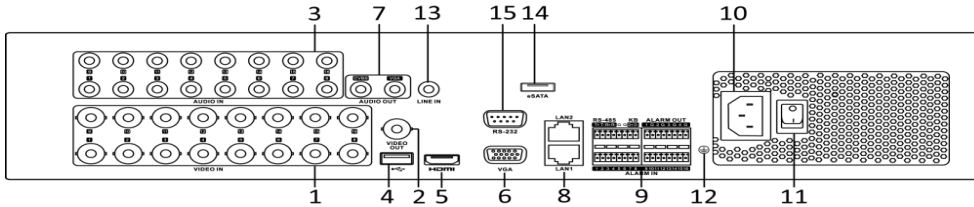
 The device is activated.

**OK**

# Panel and Interface



Front Panel

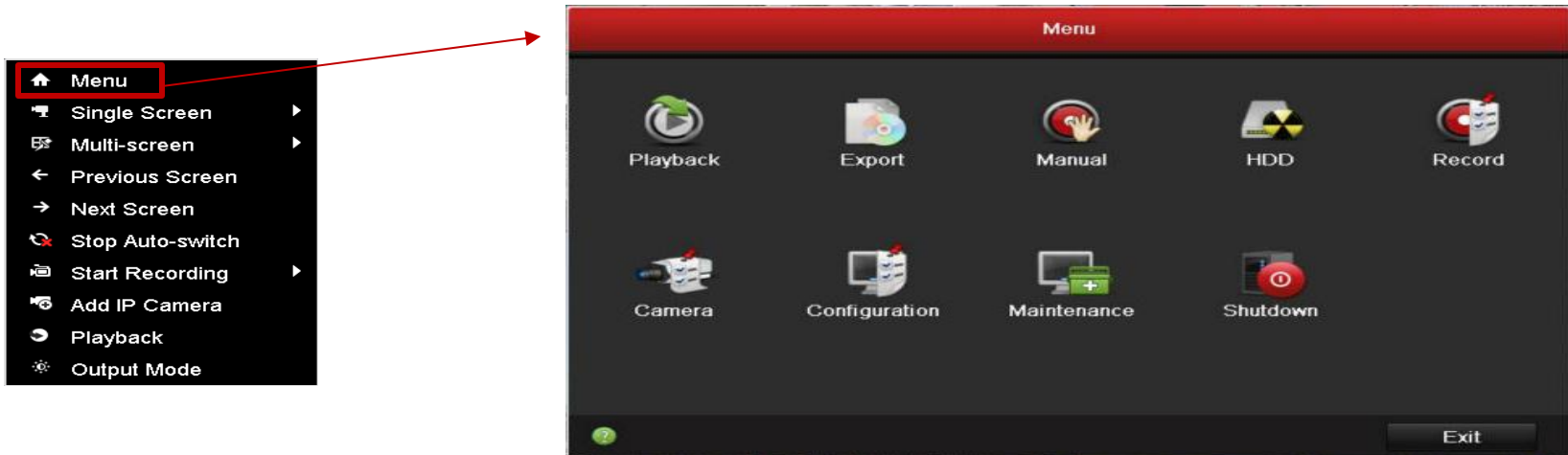


Rear Panel

No.	Item
1	VIDEO IN
2	VIDEO OUT
3	AUDIO IN
4	USB Port
5	HDMI
6	VGA
7	AUDIO OUT
8	Network Interface
9	RS-485 and Alarm Interface
10	Power Supply
11	Power Switch
12	GND
13	LINE IN
14	eSATA
15	RS-232 Interface

# Recorder Menu GUI

The Hikvision recorder Graphical User Interface is common to all of our recording devices, one system, one learning process for any and every recorder. It is accessed by selecting Menu from the desktop menu (right click mouse)



# Introduction of Basic Recorder Operation

- **IPC Connection**
- **Recording Configuration**
- **PTZ Configuration**
- **Playback and Export**
- **Exception Configuration**


# QuickAdd

## Path

- Menu-Camera-IP Camera

Cam...	Add/De...	Status	Security	IP Camera Addr...	Edit	Upgrade	Camera Nam
...	+	—	✓ Active	192.168.1.64	✎	—	—
...	+	—	✓ Active	10.16.1.14	✎	—	—
...	+	—	✓ Active	10.16.1.205	✎	—	—

## Key Points

- Cameras of the same segment will be detected and displayed in the list
- Before the adding, make sure the IP cameras to be added share the same password as the DVR
- Click on  button to add the camera
- Or click one-touch adding button to add all the cameras from the list

# Manual Add

## Path

- Menu-Camera-IP Camera

**Add IP Camera (Custom)**

No.	IP Address	Amount of Channels	Device Model	Pr
1	10.16.1.93	1	IP Dome	H

< | | | >

IP Camera Address	10.16.1.93
Protocol	~
Management Port	8000
Transfer Protocol	Auto ~
User Name	admin
Admin Password	

Continue to Add

Search Add Back

## Key Points

- Click on custom adding to enter the manual adding interface
- Input camera IP, protocol, port no., username and password
- Click Add button to add the camera



# Introduction of Basic Recorder Operation

- IPC Connection
- **Recording Configuration**
- PTZ Configuration
- Playback and Export
- Exception Configuration

# HDD Initialization

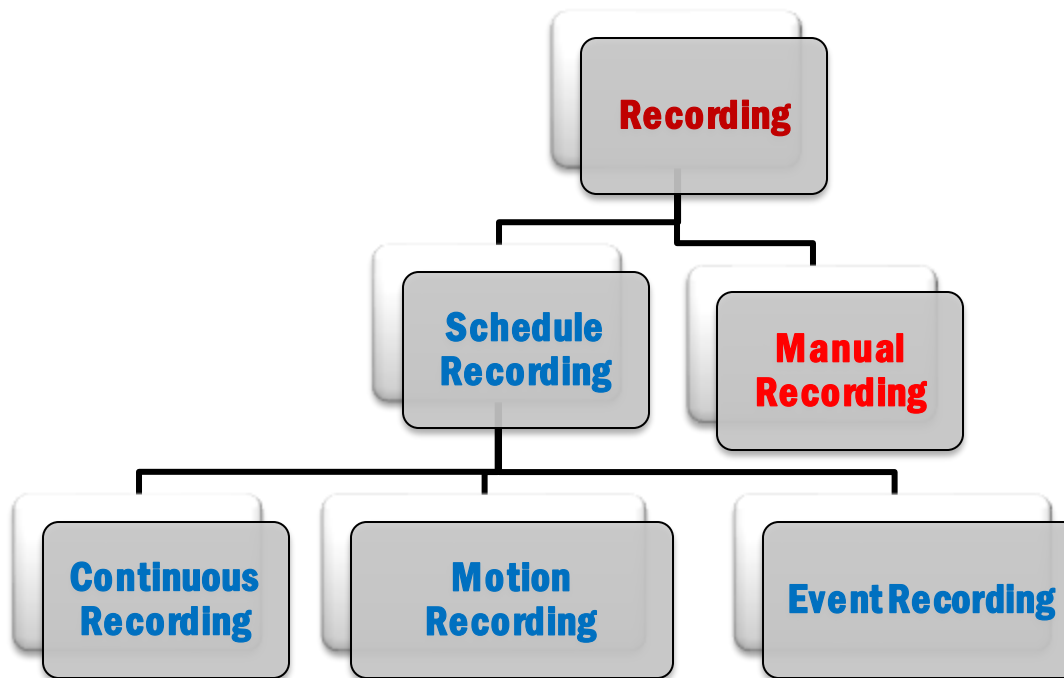
## Path

- Menu - HDD - General

## Key Points

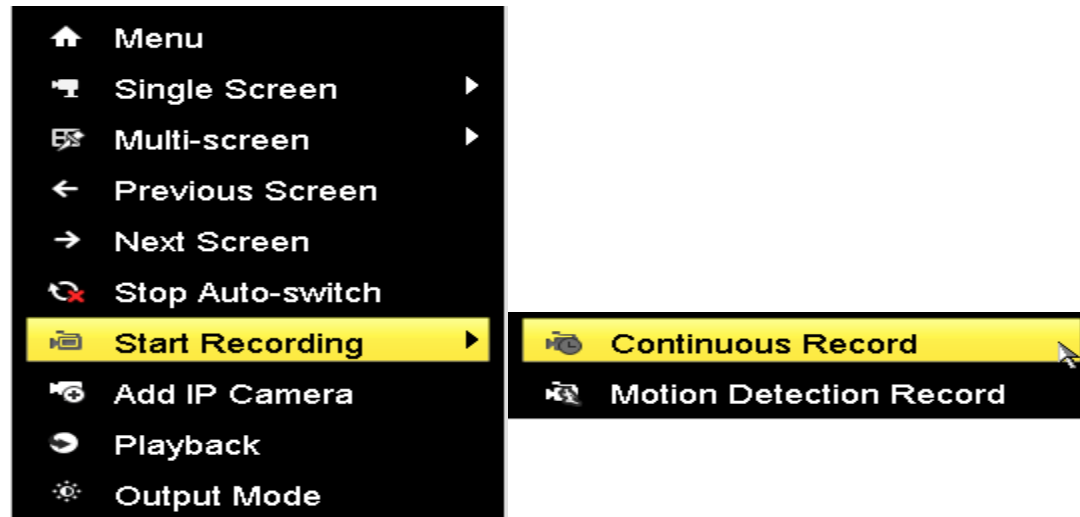
- Check the checkbox before the listed HDD you want to initialize
- Click on “Init” button to start initialization.





# One-Key Recording

Right click with a mouse on the live view interface and select start recording to enable 24/7 continuous or motion recording for all channels.



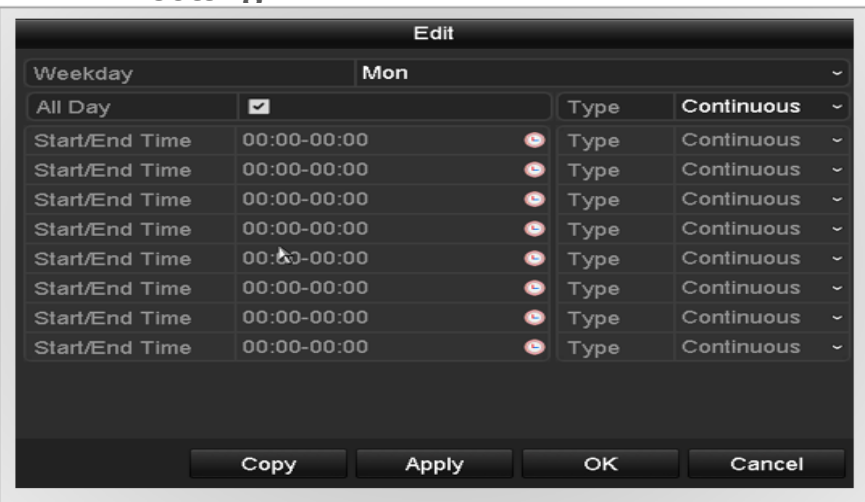
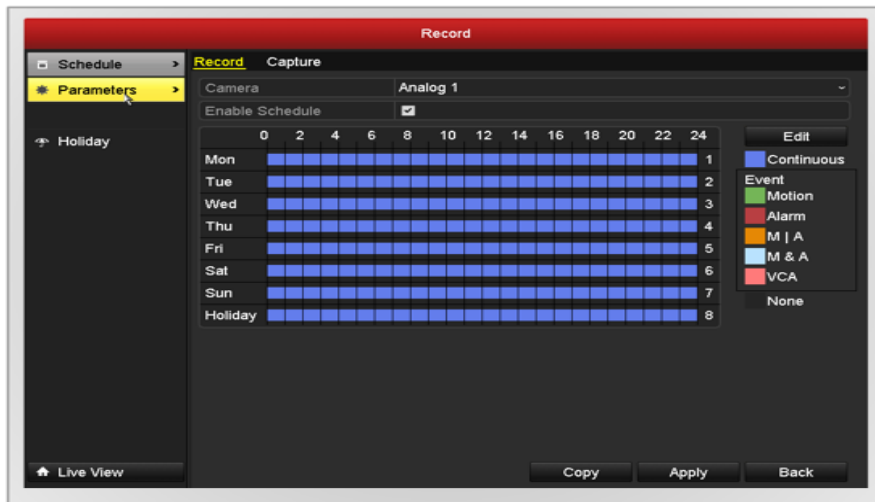
# Continuous Recording

## Path

- Menu-Record-Schedule

## Key Points

- Select a camera and configure the recording parameter
- Enable schedule, set the record type as continuous and draw the schedule
- Select other cameras and do the same setting



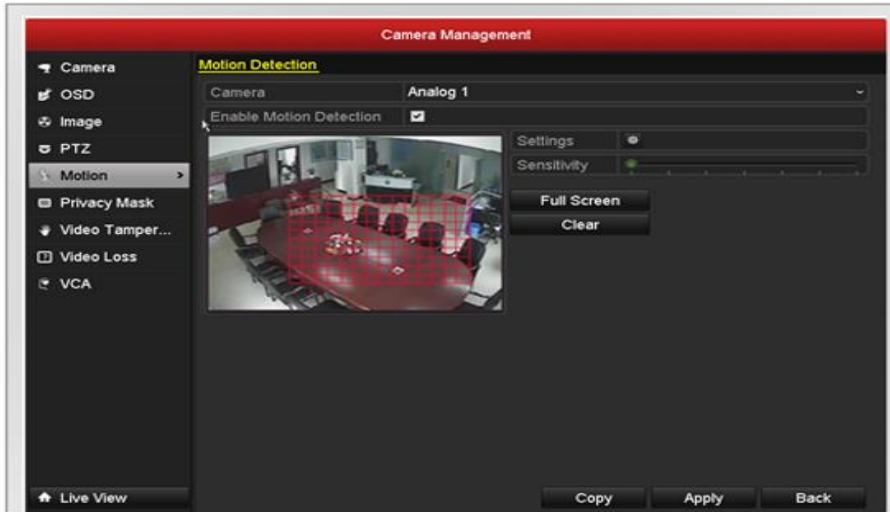
# Motion Recording - Select

## Path

- Menu - Camera - Motion

## Key Points

- Select a camera and enable motion detection, set the detection area and sensitivity, check the trigger channel and save settings
- Select other cameras and do the same setting



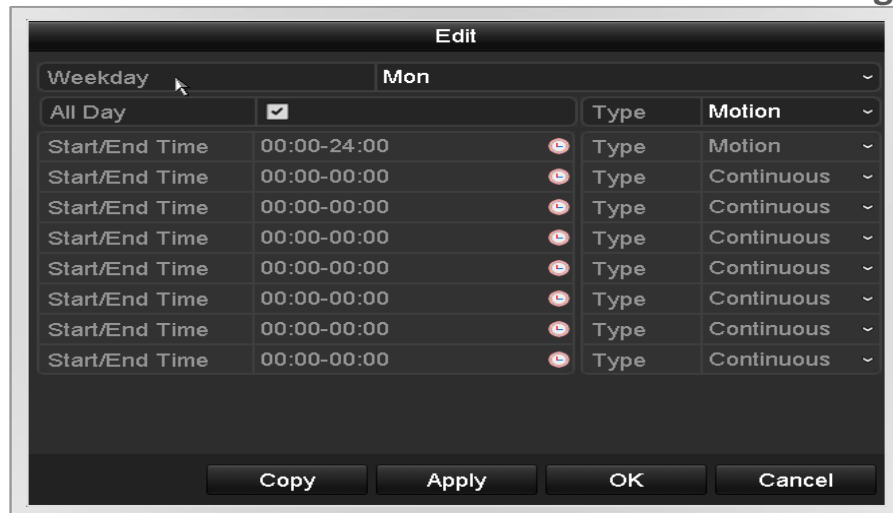
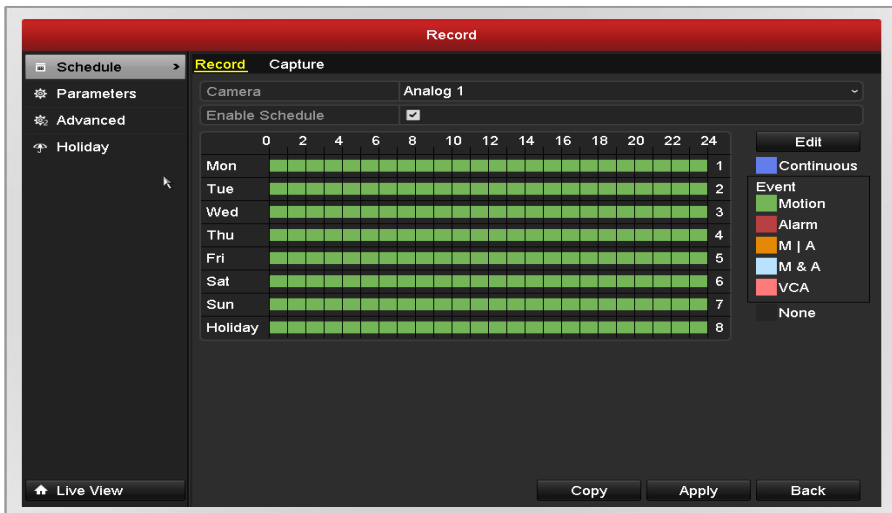
# Motion Recording - Configure

## Path

- Menu - Record - Schedule

## Key Points

- Select a camera and configure the recording parameter
- Enable schedule, set the record type as motion and draw the schedule
- Select other cameras and do the same setting



# Introduction of Basic Recorder Operation

- IPC Connection
- Recording Configuration
- **PTZ Configuration**
- Playback and Export
- Exception Configuration



# PTZ Configuration

## How to successfully manage PTZ control?

- ❑ Wiring must comply with industry standard
- ❑ PTZ parameters of the DVR match those of the PTZ camera

## Path

- ❑ Menu – Camera - PTZ

## Key Points

- ❑ Baud Rate
- ❑ Protocol
- ❑ Address

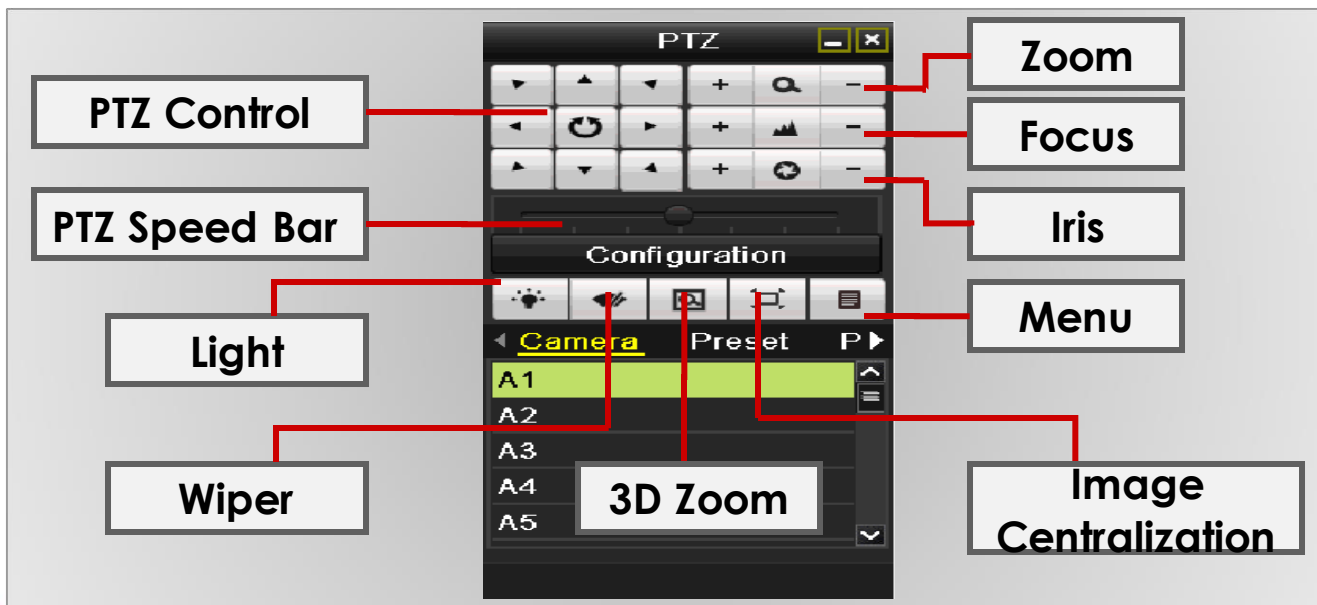


## Path

- Press the PTZ button of front panel, or click on the PTZ icon on live view's quick launch menu to show the PTZ control panel.

## Key Points

- Operate on the PTZ control panel

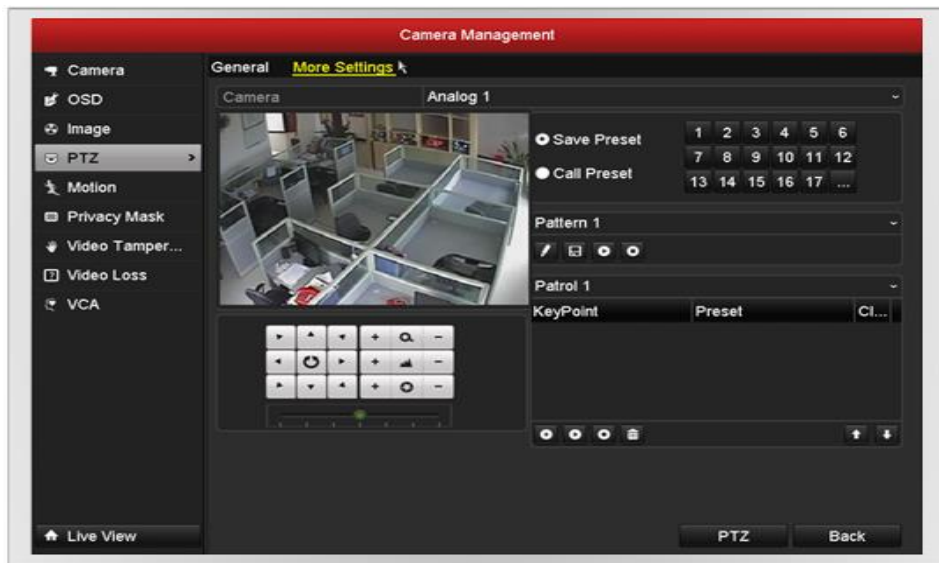


## Path

- Menu - Camera - PTZ

## Key Points

- Configure preset: pan tilt and zoom the camera to a position, then select the “save preset” checkbox and click on the number to save.
- Call preset: Select the “call preset” checkbox and click on the number to call corresponding preset.



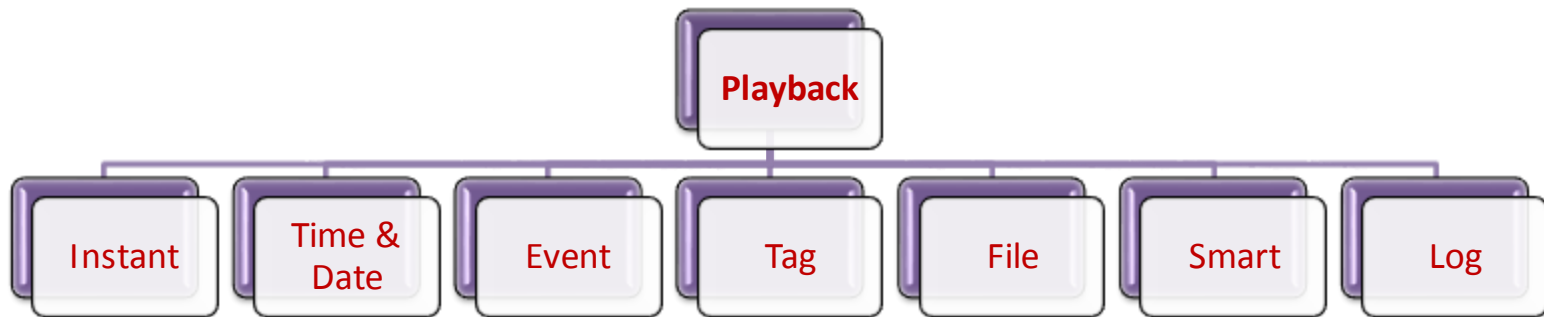
**Note:** Some PTZ protocol might not support the preset function.

# Introduction of Basic Recorder Operation

- IPC Connection
- Recording Configuration
- PTZ Configuration
- **Playback and Export**
- Exception Configuration

# Playback

There are many options for playing back video from the recorder to enhance the speed or ability to find an incident and the correct footage. Or replay a file previously put onto a memory stick or internal CD/DVD



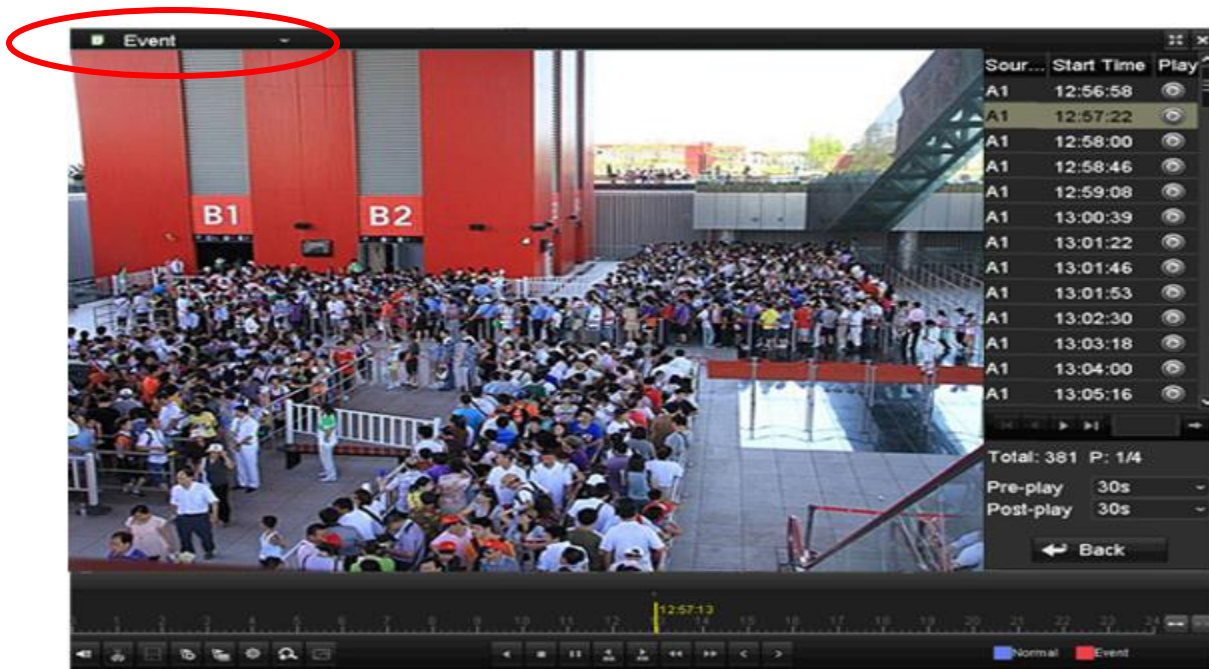
# Instant Playback

Click on the live view window, and a quick launch menu pops up, then click on the playback button to instantly playback record file in 5 minutes.



# Event Playback

Enter playback interface >> Select event playback >> Select event type and Camera >> Search and playback.



# Tag Playback

Enter playback interface >> Start playback and add tags.

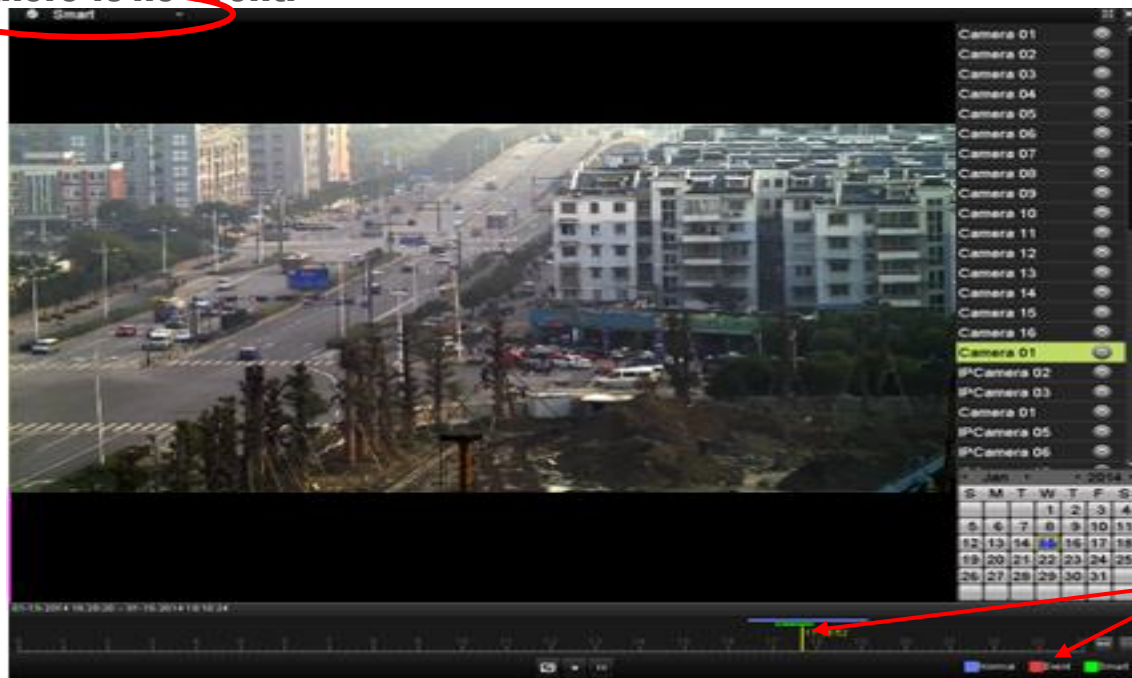
Enter playback interface >> Select tag playback >> Select camera, input tag keyword >> Search and playback.





# Smart Playback

Enter playback interface >> Select smart playback >> Select a camera and date >> Start smart playback, which will playback the event record in normal speed and fast forward the playback when there is no event.



# External File and Log Playback

## EXTERNAL File

Enter playback interface >> Select external file playback >> Select external storage device >> Select a file



## LOG

Enter Maintenance >> Log Search >> Select a log with record file and playback.

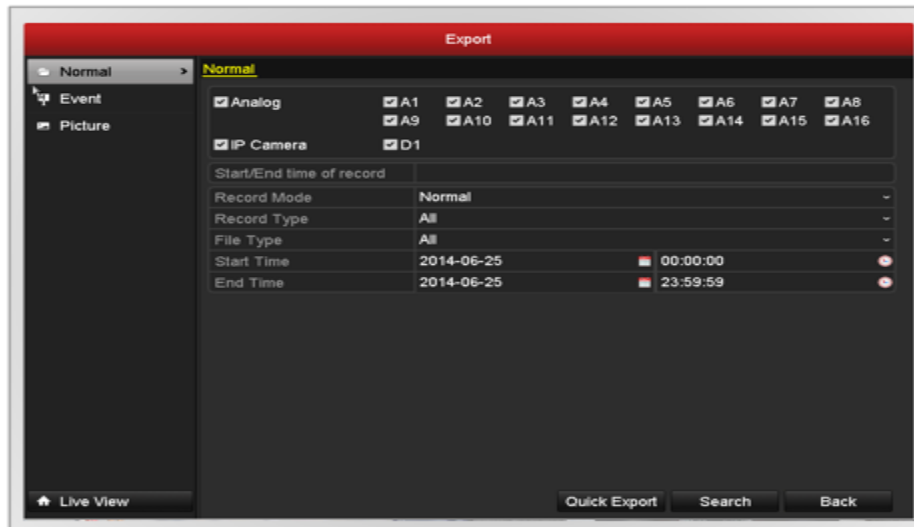


## Path

- **Menu - Export**

## Key Points

- **Set the search condition and start search**
- **Select the record file then start backup**

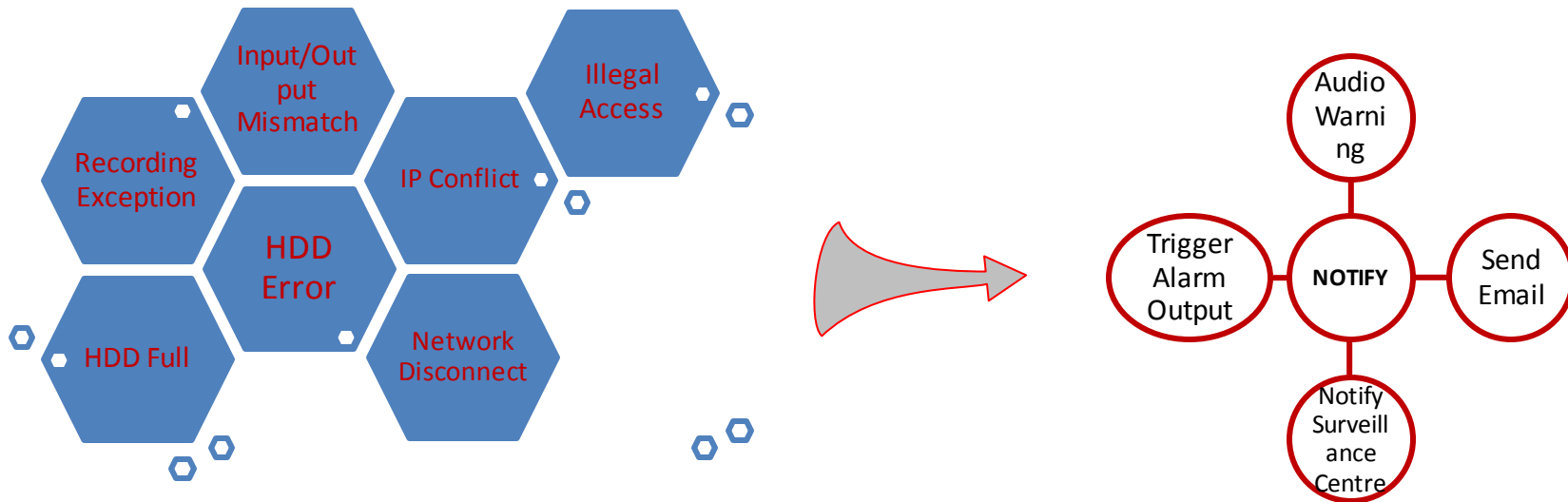


# Introduction of Basic Recorder Operation

- IPC Connection
- Recording Configuration
- PTZ Configuration
- Playback and Export
- **Exception Configuration**

# System Exceptions & Triggers

Various system exceptions and notification methods can be set for once an exception occurs.



# Email Exception Notification

Before configuring the email settings, please make sure the network parameters are correctly configured, including, IP address, subnet mask, gateway, DNS, etc.

